

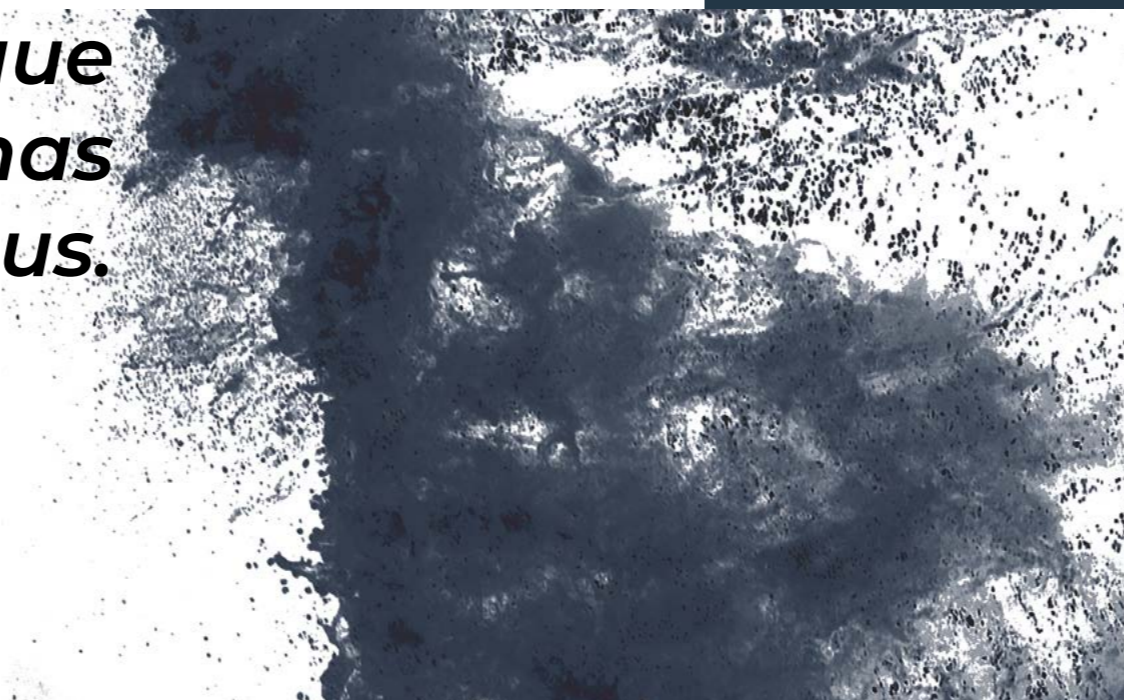


DRIVE THE SEA.

Strider

77

*Each model comes from a thought, from a pencil that flows on a sheet and comes to life thanks to the passion for unique and brilliant design that has always distinguished us.*



**SACS**

# *Design and architectural elements with a sharp attitude: this is the Sacs mix.*

Under the aspiration of a visionary strategy, Sacs has traced the new trends in the sector by inaugurating the era of the maxiribs, which combine the comfort and safety of ribs, with the luxury and design of the yacht.

Sacs Owner is a daring enthusiast with a dynamic, smart, contemporary lifestyle.

He wants to own something special and unique that can be separated from the rest, from the masses, from the crowd. He is always looking for his own personal way of living the sea, dominating the waves and feel the taste of freedom.

Sacs, Drive the SEA.

**Made in Italy**  
**since 1989**



Sacs excellence shapes your thoughts.  
Each Sacs is a unique masterpiece, created following the wishes and needs of the Customers.

The most advanced technologies in the sector combined with the italian craftsmanship strengthened by passion and thirty years of experience, make the most of each boat, ensuring excellent performance, in total safety.

# Models



## Rebel



A new nautical concept to experience the sea: Rebel has re-written the rules. BORN TO REBEL.

## Strider



Performance, design and comfort, combined with a surprising personality. However you want to experience the sea, there is the perfect rib for you. NO LIMITS TO YOUR DREAM.

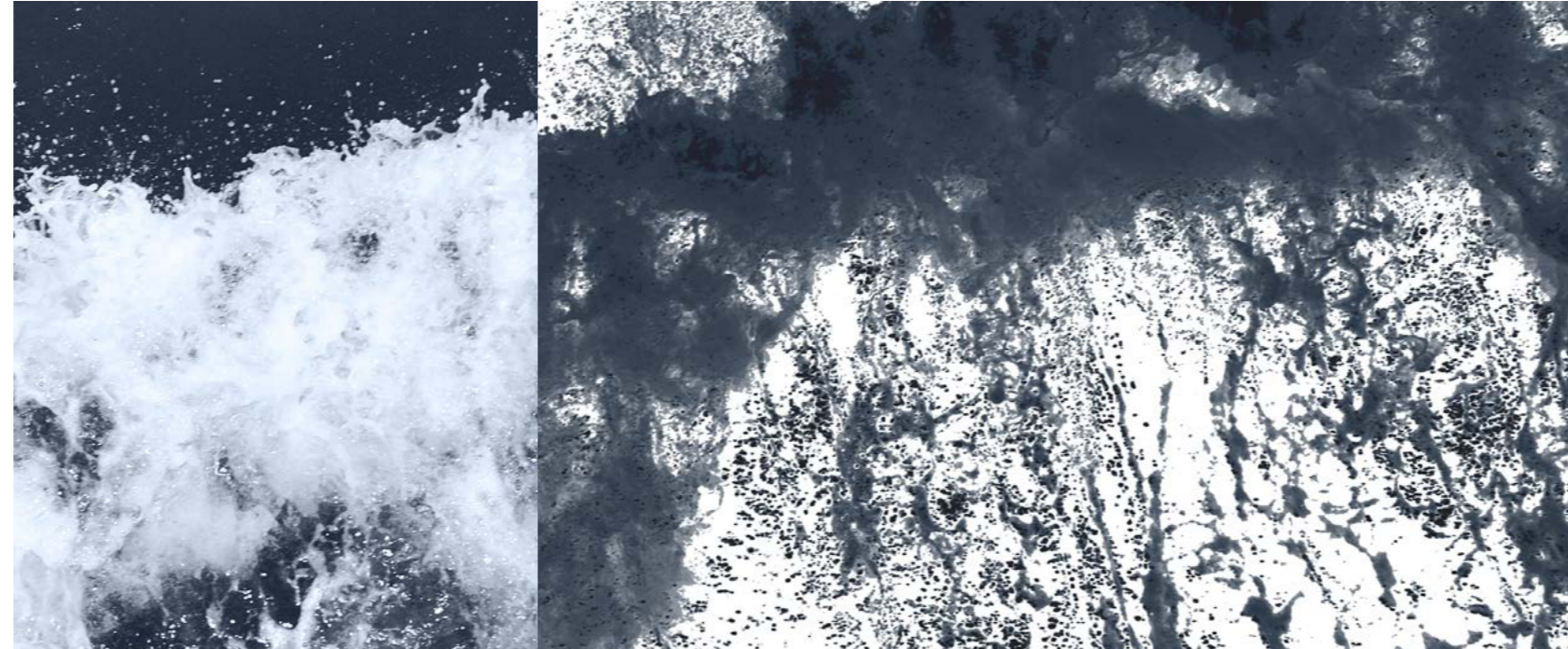
# Strider 11





# **Strider 11**

Refined, relaxing,  
thrilling



Main boat or tender use? A confident and captivating line, greater comfort than normal, the perfect mix of thrills, relax and fun.

**544kw**  
Maximum installable  
power

**47kn**  
Maximum Speed

**14**  
Persons capacity

\*The values refer to the tests performed in optimal weather conditions with the boats equipped with the inboard suggested engine.



# Outboard

Detail: carbon fiber Sport Top





Convertible Cockpit with sunbathing area



Convertible Cockpit with convivial area

# Outboard

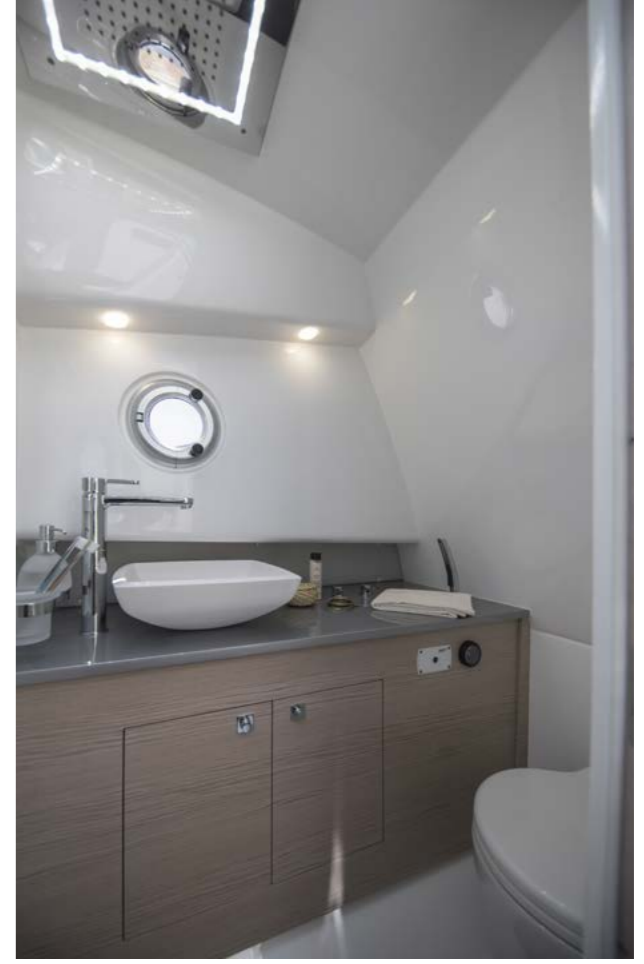
Comfortable and stylish bow master stateroom with double bed



## All in *details*

Each Sacs boat reflects the style of its Owner, even in the smallest details. A professional team accompanies the Owner in the configuration process and choice of the wide range of fine essences, refined textures and design accessories

Bathroom area with rain shower and toilet





Cockpit view from stern sunbed



Enjoyable living area, adjustable table, food&beverage storages

Console with two forward-facing captain's seats

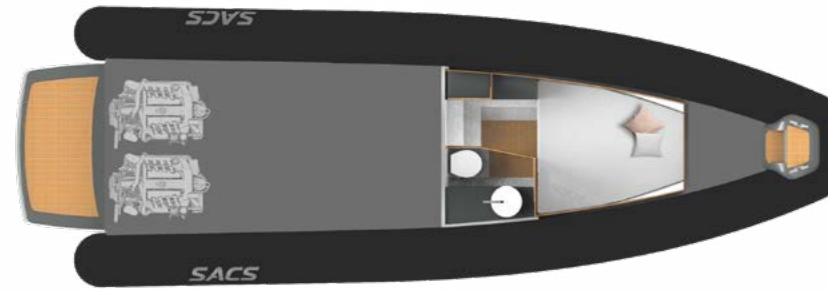


Details: Sacs eyes are watching you



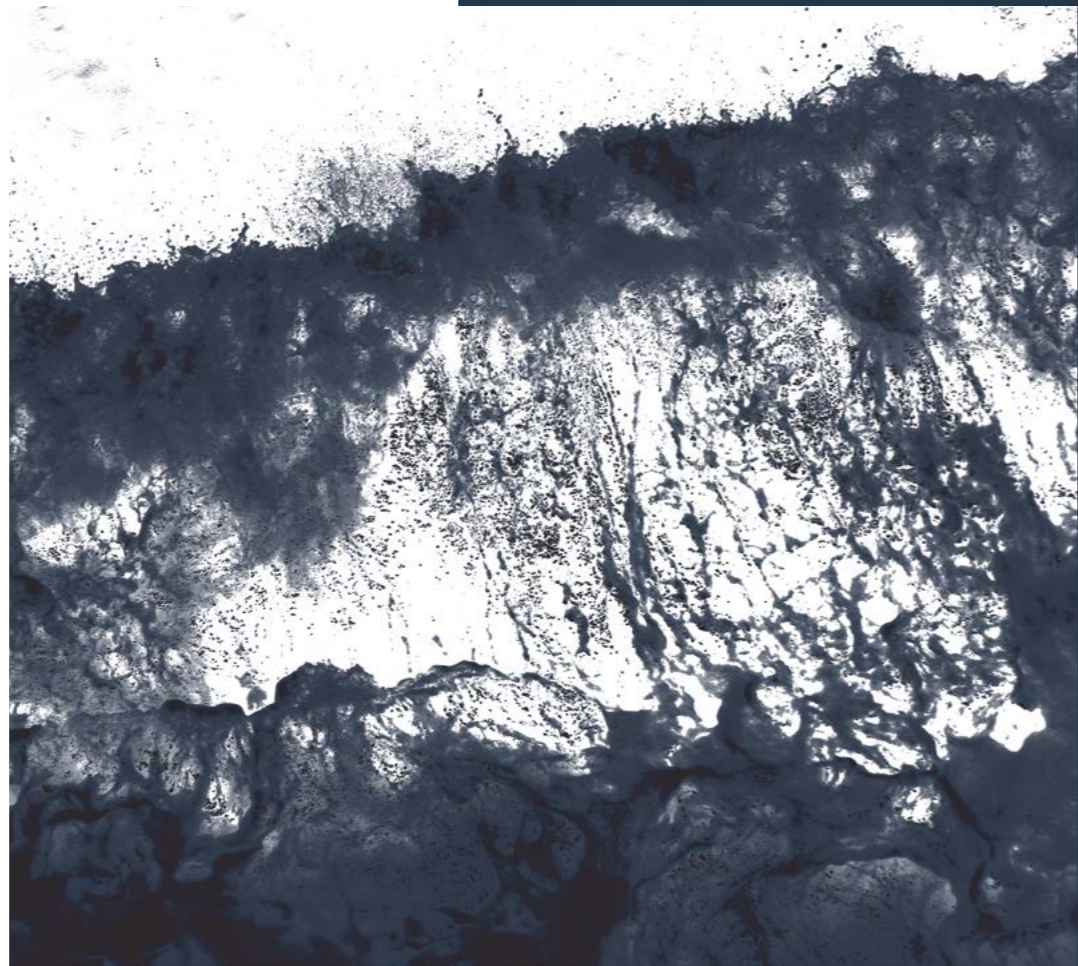
Main deck  
INBOARDSide  
INBOARD

Lower deck

Main deck  
OUTBOARD SUNDECKSide  
OUTBOARDMain deck  
OUTBOARD OPENBACK

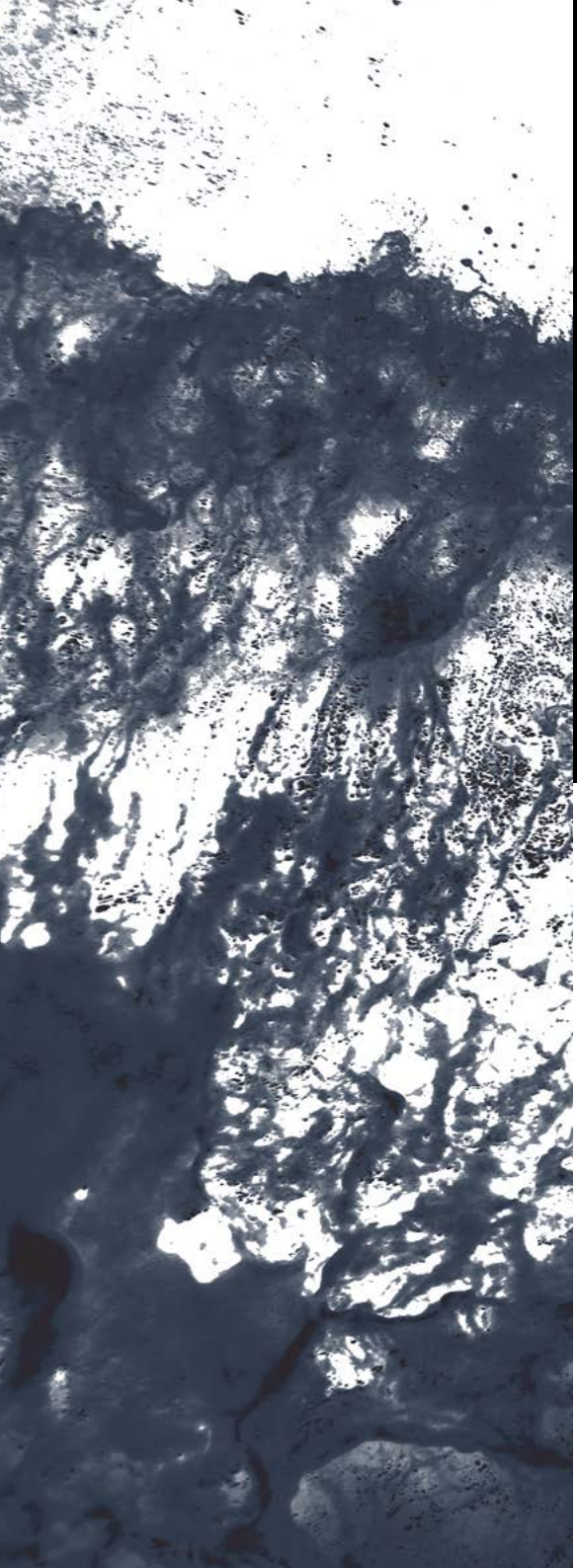
# Technical specifications: Strider T1

	INBOARD	OUTBOARD SUNDECK	OUTBOARD OPENBACK
Overall length	11,02 m	11,51 m	
EC certifying length	9,98 m		
Max beam	3,79 m		
Draft (to the prop)	0,60 m (0,80m)	0,60 m (0,85 m)	
Tubes	70 cm		
Number of tubes compartment	6		
Hull type	Deep V Hull		
Dead rise	24,3°		
Dry weight with standard engines	4,5 t	4,5 t	4,2 t
Fuel tank capacity	530 L		
Water tank capacity	130 L		
Waste tank capacity	40 L		
Homologation category	CE-B		
Persons capacity	14		
Sleeping accommodation	2	2+2 opt	2
<b>Maximum installable power</b>	<b>544 KW</b>	<b>662 KW</b>	
<b>Suggested engine</b>	<b>2X Volvo Diesel D4 – 320hp DPI</b>	<b>2X Mercury 300 hp</b>	
<b>Transmission</b>	<b>Stern Drive</b>	<b>Outboard</b>	
<b>Max speed</b>	<b>47 kn</b>	<b>48 kn</b>	
<b>Cruise speed</b>	<b>28 - 32 kn</b>		
<b>Consumption (speed)</b>	<b>70 L/h (28 kn)</b>		
<b>Range at cruising speed</b>	<b>220 NM</b>		
Design	Christian Grande DesignWorks		
Project	SACS		



The Characteristics of the boats are provided as example only. Furthermore, under any circumstances the above mentioned descriptions shall not represent an element to be used as assessment of conformity of the boats, including matters pursuant to the European directive EC 00/44.


As part of the strategy of constantly updating the technical and styling features of the boat, SACS reserves the right to amend the features of its boat at any time. The Customer must therefore carefully verify the features of the boat with SACS sales force before placing his order.



Via Don Locatelli, 49  
20877 Roncello (MB)  
Italia

Tel: +39 039 6885489  
Email: [info@sacsmarine.it](mailto:info@sacsmarine.it)  
[www.sacsmarine.com](http://www.sacsmarine.com)

 @SACS Sacsmarine

 @OfficialSacsMarine

 @sacsmarine\_official